



# The Village View

## WELCOME WARM WEATHER—FROM OUR MAYOR

May 2023

As the temperatures rise and we spend more time outside, please be aware of foot and cycle traffic.

Lewisburg Community Gardens have been refurbished, soil freshened and ready for planting. Kale, Lettuce, onions, cabbage, spinach, broccoli, peas, beet, and carrots are spring hardy plants. Plots 3, 6 and 7 on the ground are assigned leaving 6 others available. A raised garden plot is also available, so you do not have to bend, kneel or stoop to enjoy gardening! If you are interested in a plot at Lewisburg Community Gardens, please contact Marsha Jones at 937-286-2376 or Belinda Harry at 937-533-2413



Lewisburg Farmers Market will be at Tri County North school parking lot on Mondays from 5:00 to 7:00pm beginning June 5th.

There are many activities to enjoy in our community this Spring/Summer season.

Keep in touch by visiting Lewisburg Website at [Village of Lewisburg \(webs.com\)](http://Village of Lewisburg (webs.com)).

Enjoy the outdoors and all our community has to offer.

Thank you for your contribution to Lewisburg's mission statement "to develop a thriving community, to lead by example, and present opportunities for others to contribute to a safe, healthy, and desirable place to live, work, play and visit".

Marsha Jones, Mayor

### VILLAGE PROPERTY MAINTENANCE



Following are some points of the property maintenance code to keep in mind as we enter the spring season:

- ◆ Please note that mattresses and upholstered furniture must be wrapped in plastic before the Village can pick them up. If they are not wrapped, we cannot take them.
- ◆ Residents are asked not to blow or discharge grass clippings into the street, especially the curb. Over a period of time, grass clippings accumulate in the curb causing the flow of rain water to be altered. It can also cause catch basins to become clogged, resulting in flooding of the streets during heavy rains.
- ◆ Property owners should place their trash curbside the night before pickup. Setting your trash out two or three days before your regular pickup day only allows for an unsightly presence in the Village and also allows the opportunity for the trash to get knocked over and scattered.
- ◆ Properties should be free of broken glass, stumps, garbage and other debris. Dead trees, limbs or other natural growth that is rotting should be removed. Lawns, hedges and bushes should be kept from becoming overgrown. Grass may not exceed a height of 8 inches.
- ◆ Parking restrictions exist for trailers and/or campers on public streets and driveways. Trailers may only be on streets or in driveways for 48 hours in any 7 day period for temporary loading and unloading. Recreational vehicles, camping and recreational equipment and trailers shall be parked or stored behind the front property setback line and on a hard-ened surface (i.e., concrete, asphalt, stone, etc.).
- ◆ Please remember that it is a violation of Village Ordinance 1333.04(e)(9) to store your trash cans/toters in front of your house. So, please remember to store your garbage cans out of sight.

This is just a small sampling of the property maintenance code. You can pick up a copy of the property maintenance code at the Village offices. If you have a property maintenance complaint, please contact the Village offices at 937-962-4377 where the complaint will be turned over to the proper personnel for investigation.

Fire and EMS Department News

We would like to remind our citizens that tornado sirens are tested the 1<sup>st</sup> Wednesday of the month at noon. There are four alerting devices in our service area. These are located next to the village water tower, at the fire station, adjacent to the Knollwood subdivision, and near West Sonora.

\*\*\*\*\*

With the onset of spring and the desire to do spring cleaning, the departments would like to offer some simple steps to protect your family and home.

- Clear leaves, debris, and other yard waste from around the home, garage, and storage sheds.
- Check for frayed or damaged electrical cords and wires. Replace them or have them repaired by a qualified professional.
- Remove any combustibles from around hot water tanks, clothes dryers, and vents.
- Remove lint build-up from clothes dryers.
- Get rid of oily rags and recycle stacks of newspapers.
- Have a working flashlight and battery-powered radio in the event of a power outage.

\*\*\*\*\*

The department recently received a new ambulance to replace a unit that has been in service since 2006. We are in the process of finalizing details to be able to put the new

ambulance in service very soon. Our team would like to thank our Village Council, Harrison and Twin Townships, and the Village of Verona for their support.

\*\*\*\*\*

The Fire/EMS would like to thank those that attended our annual Easter Egg Hunt. A great time was had by all of those in attendance. Many youngsters enjoyed the opportunity to meet the Easter Bunny and get a picture taken.

\*\*\*\*\*

As warmer weather approaches, the fire department with assistance from the Village Service Department are making improvements at our training center on Water Tower Lane. These enhancements, made possible by a generous donation, will enable us to expand our training capabilities. This invaluable resource down through the years has increased our abilities to serve our citizens in their time of need.

\*\*\*\*\*

As a benefit to our community, we are still offering reflective address signs **free** of charge. It is extremely important that we can identify your residence quickly when responding to a call. Also, the department has smoke detectors available - **at no charge** – for our citizens.

\*\*\*\*\*

Beginning in May the departments inspections of businesses and industries will be starting for 2023. The visits by our inspectors will be for the purpose of assisting the aforementioned facilities with their fire prevention efforts.

\*\*\*\*\*

Please contact us for CPR classes, child car seat installations, and green address signs. We can be reached at (937) 962-4640.

\*\*\*\*\*

**PERSONNEL NOTES:**

With the retirement of Assistant Chief, Pat Fink, at the end of 2022 it was necessary to find a suitable replacement. This difficult task was made exponentially easier when Randy Anderson applied for the full-time position. Randy not only brings a wealth of knowledge, experience, and skills to the table, but he is one of our own. We are more than happy to have this excellent young man back as a full-time firefighter/paramedic.

\*\*\*\*\*

Our department would like to thank Chase McGrath for his 19 years of service. He is a dedicated and devoted public servant. Firefighter McGrath has brought much knowledge and skills to our team.

\*\*\*\*\*

On April 14<sup>th</sup>, one of our members, Delaney Shively, completed all the requirements to become a certified Level II Firefighter. For 10 weeks she persevered and dedicated herself at the Ohio Fire Academy to reach the highest level of firefighter in the state of Ohio. We cannot say how proud we are of her accomplishments. There is a tremendous amount of appreciation to Delaney for serving her hometown. This young lady will most certainly be a huge asset to our department.

\*\*\*\*\*

The pride we have in our own young people continues to shine on in Casey Whipp. This young man is currently a Level II Firefighter and EMT and is enrolled in the Paramedic Program at Sinclair College. Casey is a third-generation public servant starting with his grandparents Joanne and Donnie Whipp as well as his parents, Beth and David Whipp. We are definitely a blessed department to have the dedication of this latest generation of young people serving our community.

\*\*\*\*\*

We will be set-up at the first Friday Block Parties. Please stop by and visit us. As always, anyone with questions/concerns regarding our departments, contact the Station at 937-962-4640.

**HAPPENINGS IN THE BURG'**

**THE CIRCUS IS COMING TO LEWISBURG!**

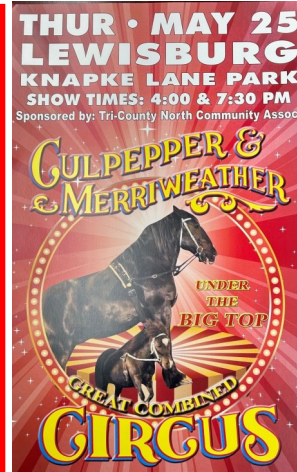
The Tri-County North Community Association will be sponsoring the Culpepper & Merriweather Circus at the Knapke Lane Park on MAY 25TH. Show times are 4:00 and 7:30 PM that day only.

Tickets can be purchased at the following locations:

- \*BRICK RHOD BISTRO
- \*HEETER INSURANCE
- \*STOREHOUSE 1983
- \*VILLAGE OFFICE
- \*YANKEE CLOVER MERCANTILE

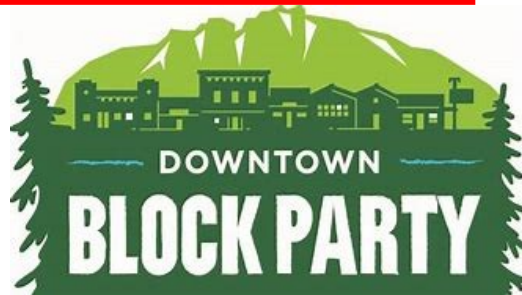
Tickets are \$13 for adults and \$8 for children.

\*One free children's ticket for each adult ticket purchased.\*



Downtown Block Parties are back for the summer!

The First Friday of each month starting in May to September from 5PM-8PM.



Visit the downtown shops along with the Bicentennial Museum!

Free hotdogs and events at Bicentennial Square!

**LEWISBURG HISTORICAL SOCIETY**

**ANNUAL ICE CREAM SOCIAL**

**JUNE 17TH 2023 10AM-5PM**

Ullery's homemade ice cream

Duck Regatta to start at 3:30 PM at Twin Creek

Cincinnati Northern Model Train Display

Free photo booth pictures taken by Foto Me RN

**2nd ANNUAL DUCK REGATTA**

\$5. Buys a Duck

\$20. Big Quacks: Buys 4 ducks and get 1 free

\$30. Quack Pack: Buys 6 ducks and get 2 free

\$40 Birds of a Feather: Buys 8 ducks and get 3 free

WINNER TAKES HOME \$150.00



**STEAK FRY & AUCTION**

— Mark your calendars for the 2023 Steak Fry & Auction to be held on Saturday, July 8th with more information to come so watch the Village Facebook page and website.

— This event is a fundraiser for Derby Days which will be held August 10-12, 2023.

Water Community Confidence Report is included with this Newsletter edition. This report is provided annually as part of the Ohio EPA requirements to provide safe drinking water to our residents. Our staff works hard to maintain the water system .



P O Box 697  
112 S Commerce Street  
Lewisburg, OH 45338

Phone: 937-962-4377  
Fax: 937-962-2900

BULK RATE  
U.S. POSTAGE PAID  
MAILED FROM ZIP CODE  
45338  
Permit No. 84

**Mayor**—Marsha Jones  
[marsha.jones@lewisburg.net](mailto:marsha.jones@lewisburg.net)

**Council Members**  
Chad Woodworth  
[chad.woodworth@lewisburg.net](mailto:chad.woodworth@lewisburg.net)  
Belinda Harry  
[belinda.harry@lewisburg.net](mailto:belinda.harry@lewisburg.net)  
Dennis Roberts  
[dennis.roberts@lewisburg.net](mailto:dennis.roberts@lewisburg.net)  
Ted Thies  
[ted.thies@lewisburg.net](mailto:ted.thies@lewisburg.net)  
Lori Pheanis  
[lori.pheanis@lewisburg.net](mailto:lori.pheanis@lewisburg.net)  
Barb Foster  
[barb.foster@lewisburg.net](mailto:barb.foster@lewisburg.net)

**Municipal Manager**  
Jeffrey Sewert  
[jeff.sewert@lewisburg.net](mailto:jeff.sewert@lewisburg.net)

## Upcoming Village Events

- \* **May 25th—The Circus comes to town with Culpepper & Merriweather at the Knpke Lane Park. Shows at 4:00 & 7:30 PM.**
- \* **Historical Society Ice Cream Social—June 17th 10 AM to 5 PM**
- \* **July 8—Steak Fry & Auction Fundraiser for Derby Days by the Tri-County North Community Association.**
- \* **August 10-12—Derby Days**
- \* **First Friday Night Block Party – Beginning in May and running through September from 5:00 PM to 8:00 PM. A great time to visit with friends and enjoy the shops that are open late.**
- \* **Joy & Whimsy Depot Spring Exhibition opens May 5th with Summer Session opening on July 7th. Hours are Saturdays 11AM-4PM and Sundays from 1-4PM. Also open during First Friday Night Block Parties.**
- \* **Farmers Market at TCN—Mondays 5 PM to 7:30 PM starting in June**
- \* **Bingo Night/Community Center—2nd Saturday—Suspended for the summer months and starting again in September—Doors open at 6 PM**
- \* **Visit the Brown Memorial Public Library website to keep up with their many events for all ages at [brownmemorial.lib.oh.us](http://brownmemorial.lib.oh.us)**

# 2022 ANNUAL DRINKING WATER QUALITY REPORT

---

## VILLAGE OF LEWISBURG

---

This brochure explains how drinking water provided by the Village of Lewisburg is of the highest quality. Included is a listing of results from water quality tests as well as an explanation of where our water comes from and tips on how to interpret the data. We're proud to share our results with you. Please read them carefully.

**We are proud to report that the water provided by the Village of Lewisburg meets or exceeds established water quality standards.**

### Water source

The Village of Lewisburg is supplied by groundwater pumped from 3 wells, located adjacent to the water treatment plant on Clay Street. The aquifer that supplies drinking water to the Village has a high susceptibility to contamination, due to the sensitivity of the aquifer in which the drinking water wells are located and the potential contaminant sources within the protection area. This does not mean that this well field will become contaminated, only that conditions are such that the ground water could be impacted by potential contaminant sources. Future contamination may be avoided by implementing protective measures. More information is available by calling 962-4377.

### Important Health Information

Drinking water, including bottled water, may reasonably be expected to contain at least small amounts of some contaminants. The presence of contaminants does not necessarily indicate

that water poses a health risk. More information about contaminants and potential health effects can be obtained by calling the Environmental Protection Agency's safe drinking water hotline (800-426-4791).

The sources of drinking water (both tap water and bottled water) include rivers, lakes, streams, ponds, reservoirs, springs, and wells. As water travels over the surface of the land or through the ground, it dissolves naturally-occurring minerals and, in some cases, radioactive material, and can pick up substances resulting from the presence of animals or from human activity. Contaminants that may be present in source water include:

(A) Microbial contaminants, such as viruses and bacteria, which may come from sewage treatment plants, septic systems, agricultural livestock operations, and wildlife.

(B) Inorganic contaminants, such as salts and metals, which can be naturally-occurring or result from urban storm water runoff, industrial or domestic wastewater discharges, oil and gas production, mining, or farming.

(C) Pesticides and herbicides, which may come from a variety of sources such as agriculture, urban storm water runoff, and residential uses.

(D) Organic chemical contaminants, including synthetic and volatile organic chemicals, which are by-products of industrial processes and petroleum production, and can also come from Gas stations, urban storm water runoff and septic systems.

(E) Radioactive contaminants, which can be naturally-occurring or be the result of oil and gas production and mining activities.

In order to ensure that tap water is safe to drink, EPA prescribes regulations which limit the amount of certain contaminants in water provided by public water systems. FDA regulations establish limits for contaminants in bottled water which must provide the same protection for public health.

Some people may be more vulnerable to contaminants in drinking water than the general population. Immuno-compromised persons such as persons with cancer undergoing chemotherapy, persons who have undergone organ transplants, people with HIV/AIDS or other immune system disorders, some elderly, and infants can be particularly at risk from infections. These people should seek advice about drinking water from their health care providers. EPA/CDC guidelines on appropriate means to lessen the risk of infection by Cryptosporidium and other microbial contaminants are available from the Safe Drinking Water Hotline (800-426-4791).

### How to Read This Table

The results of tests performed in 2022 or the most recent testing available are presented in the table. Terms used in the Water Quality Table and in other parts of this report are defined here.

**Maximum Contaminant Level or MCL:** The highest level of a contaminant that is allowed in drinking water. MCLs are set as close to the MCLGs as feasible using best available treatment technology.

**Maximum Contaminant Level Goal or MCLG:** The level of a contaminant in drinking water below which there is no known or expected risk to health. MCLGs allow for a margin of safety.

**Detected Level:** The highest level detected of a contaminant for comparison against the acceptance levels for each parameter. These levels could be the highest single measurement, or an average of values depending on the contaminant.

**Action Level:** The concentration of a contaminant which, if exceeded, triggers treatment or other requirements which a water system must follow.

**Range:** The lowest to the highest values for all samples tested for each contaminant. If only one sample is tested, or no range is required for this report, then no range is listed for that contaminant in the table.

We encourage public interest and participation in our community's decisions affecting drinking water. Regular Council meetings are held on the 1<sup>st</sup> and 3<sup>rd</sup> Thursdays of each month at the Fire Station, 116 South Commerce Street, at 7:30 P.M. the public is welcome.

PWSID # 6800812

**WATER QUALITY TABLE**

Contaminants (units)	MCLG	MCL	Level Found	Range of Detections	Violation	Year Sampled	Typical Source of Contaminants
<b>Inorganic Contaminants</b>							
Fluoride (ppm)	4	4	0.47	0.77-0.87	NO	2022	Erosion of natural; Water additive witch promotes stong teeth Discharge from fertilizer and aluminum factories
Barium (ppm)	2	2	0.0162	NA	NO	2022	Discharge of drilling wastes; discharge from metal-refineries,
Gross Alpha (pCi/L)	0	15	2.46	NA	NO	2022	erosion of natural deposits
Radium (pCi/L)			0.329	NA		2022	erosion of natural deposits
<b>Residual Disinfectants</b>							
Total Chorine (ppm)	4	4	0.9	.7-1.2	NO	2022	Water Additive used to control microbes
<b>Volatile Organic Chemicals</b>							
Carbon tetrachloride (ug/l)	0	5	4.5	NA	NO	2019	Discharge from chemical plants and other Industrial activities

<b>Lead and Copper</b>							
Contaminants (units)	Level (AL)	Results over the AL	levels were less than	Violation	Year	Typical source of Contaminants	
Lead (ppb)	15	N/A	1.1	NO	2020	Corrosion of household pumbing systems, Erosion of natural deposits	
0 of 10 samples were found to have lead levels in excess of the lead action level of 15 ppb							
Copper (ppm)	1.3	N/A	0.0948	NO	2020	Corrosion of household plumbing systems; Erosion of natural deposits.	
0 of 10 samples were found to have copper levels in excess of the copper action level of 1.3 ppm							
<b>Synthetic Organic Contaminants (ppb)</b>							
Alachlor	0	0	<.002	N/A	NO	2017	Runoff from herbicide used on row crops
	MCLG	MCL	Level Found	Range of Detections	Violation	Year Sampled	
<b>Disinfection Byprodu (ppb)</b>							
Total Trihalomethan	N/A	80	34.9	23.3-45.6	NO	2022	By-product of drinking water chlorination
Total Trihalomethan	N/A	80	7.2	23.3-45.6	NO	2022	By-product of drinking water chlorination

For more information, contact Bruce Robbins with the Village of Lewisburg at (937) 962-4377

**Key to table**  
 AL=Action level  
 MCL=Maximum contaminant level  
 MCGL=Maximum contaminant level goal  
 MRDL=Maximum residualdisinfectant level  
 ppm= parts per million, or milligrams per liter (mg/l)  
 ppb= parts per billion, or micrograms per liter (ug/l)  
 na= not applicable  
 <= Less than  
 BDL= Below detectable level

The Village of Lewisburg has a current, unconditioned license to operate our water system. The Village of Lewisburg also has three employees that have a class one or better operators license.

**Important Health Information**

If present, elevated levels of lead can cause serious health problem, especially for pregnant women and young children. Lead in drinking water is primarily from materials and components associated with service lines and home plumbing. The Village of Lewisburg is responsible for providing high quality drinking water, but cannot control the variety of materials used in plumbing components. When your water has been sitting for several hours, you can minimize the potential for lead exposure by flushing your tap for 30 seconds to 2 minutes before using water for drinking or cooking. If you are concerned about lead in your water, you may wish to have your water tested. Information on lead in drinking water, testing methods, and steps you can take to minimize exposure is available from the Safe Drinking Water Hotline or at <http://www.epa.gov/safewater/lead>.